

User's Manual
Joape
BOB



High Quality Product
Joape

USER'S MANUAL

Congratulations on your purchase of a EcoJet by Joape BOB Misting Fan!

Your new misting fan will be a great addition to your home, business or work environment, and will keep you comfortable throughout the year. Under the proper conditions your BOB fan will provide a cooling "cloud" of from 200 up to 400 square feet.

EcoJet by Joape offers a variety of "Brazilian Cool" misting fans in Residential, Commercial and Industrial product lines in a range of colors and sizes.

Joape is a green technology company with over 30 years experience in the acclimatizing equipment industry in Brazil. Their focus is on the development of new technologies and products offering high quality solutions, while respecting and preserving the environment.

For your personal safety and to maximize the performance of your EcoJet by Joape Cooling Solution Fan, please read this User's Manual carefully before using your equipment. If you have any questions, please contact SouthBee Customer Assistance by emailing admin@southbee.com or at 305-713-4424 during work hours, Monday to Friday from 9-5pm.

PLEASE READ & SAVE THIS USER'S MANUAL WITH INSTRUCTIONS.

"Green" Footnote: All of the packaging material is recyclable, please recycle.

Southbee, Corp – Exclusive Distributor Joape
14100 NW 60th Ave
Miami Lakes, FL 33014
Phone: +1 305-713-4424
Email: admin@southbee.com

Distributor JOAPE USA
(305) 713-4424
admin@southbee.com
www.southbee.com

IMPORTANT SAFETY INSTRUCTIONS



WARNING

To avoid risks, please observe the precautions mentioned below:

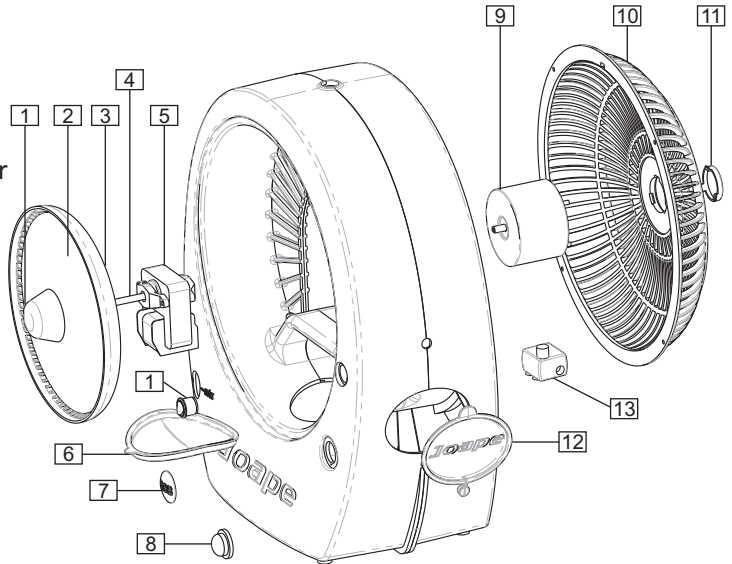
- Read all the instructions and the warranty terms before using your EcoJet by Joape BOB Cooling System.
- EcoJet by Joape BOB was designed for household or small environment use, it is not intended for large commercial or industrial use.
- Confirm the EcoJet by Joape BOB voltage of 110 volts corresponds to the local voltage(110v).
- Children should not be allowed to operate EcoJet by Joape BOB Cooling System.
- Do not leave children unattended within reach while the equipment is in use.
- Avoid any contact with moving parts, do not place objects on or in the fan.
- To avoid electrical shock, never connect or disconnect the plug with wet hands.
- Also to protect against electrical shock, do not immerse unit, plug or cord in water or spray with liquids.
- Never yank on the power cord to unplug the fan from the electrical outlet, to disconnect grip the plug and pull from the outlet.
- Always unplug fan when not in use, moving to a new location or when cleaning.
- Never add flammable liquids to the water reservoir.
- Do not place fan near an open flame, cooking or heating appliance.
- Evaporative systems demand the exchange of air, either operate the equipment with the AC is turned on or where there is air circulating
- Do not hang EcoJet by Joape BOB Cooling System on a wall or ceiling.
- Always place EcoJet by Joape BOB fan on a stable, level surface when operating, do not place on surface too small which could allow fan to tip or fall, causing damage to people or property.
- This fan has a polarized plug (one blade wider than the other), which is intended to fit into a polarized electrical outlet only one way.
- To prevent damage to the water pump do not leave fan running without water in the reservoir.

EcoJet by Joape BOB Cooling System Benefits

- Reduces the temperature with its evaporative system
- Cleanses the air of dust particles
- Hydrates the air with atomized water
- Eliminates static electricity
- Dilutes concentration of organic solvents and ammonia
- Helps eliminating gases and odors
- Electricity savings due to its low electricity consumption
- Improves performance of air-conditioning units

Components

- 1 - Finishing Cone
- 2 - Disk
- 3 - Collecting Cap
- 4 - Motor Shaft
- 5 - Disk Motor
- 6 - Protecting Cover
- 7 - On/Off Button
- 8 - Water Level Indicator
- 9 - Propeller Motor
- 10 - Back Grid
- 11 - Grid Cap
- 12 - Water Reservoir Cap
- 13 - Water Pump



Technical Details

Air Flow: 353 cfm

Noise Level: 60dB

Consumption: 128W/h

Voltage: 110V

Speed: Dual-speed fan

Water Supply: 2 gallons internal Water Reservoir

Dimensions: 19"x10"x21"

Weight: 15 lb

Packaging List

- 1 EcoJet by Joape BOB Misting Fan
- 1 User's Manual



WARNING

If the electrical cord for power supply gets damaged, it can **ONLY** be replaced by the manufacturer or authorized agent.

For maintenance, contact customer service at: admin@southbee.com or www.southbee.com



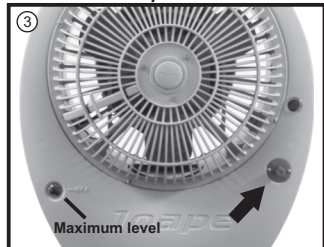
IMPORTANT WARNINGS

- The centrifugal disk spins at 3,500 RPM, do not place your hand or any other object on it when the fan is operating.
- Be careful not to spill water on the electrical part of equipment.
- NEVER turn you equipment ON without water in the reservoir.
- Do not add dirty water to the water reservoir.
- Do not clean EcoJet by Joape BOB with harsh chemicals or abrasive products.
- ALWAYS remove the water from the reservoir to store your EcoJet by Joape BOB.
- Cleaning is essential for a proper performance of the equipment.
- Do not use the equipment with damaged parts; always use original ex-factory parts.
- Adjust the mist according to the conditions of your environment.
- Users will be deemed responsible if they add flavoring agents, as well as any other chemical, to the water.
- In case any gas generator is added, the device's manufacturer will be deemed NOT responsible.
- Protect from rain and weather when using outdoors.
- If the device gets rain and/or wet please wait until it is completely dry to run again.

Installation

- 1 - Remove the equipment from the packaging. Make sure no packing materials are in the fan area.
- 2 - Place the equipment on a flat and clean surface at least 32" off the ground.
- 3 - Add up to two gallons of water to the reservoir (picture 1).
- 4 - Connect the plug into a 110V electrical outlet.
- 5 - Turn the On/Off knob to the ON position. (picture 2).
- 6 - Use the mist adjustment knob to regulate the mist flow according to the environment needs. (picture 3)

Note: When used indoors, the mist adjustment should be set on a very fine mist.



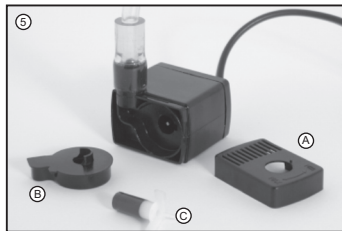
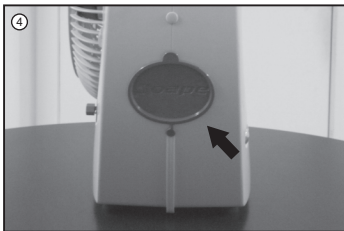
Cleaning Instructions

In areas with hard water, it may be necessary to occasionally clean the pump. Also in areas with hardwater, at the end of the season or if not used for long periods, follow this recommended cleaning procedure:

- 1 - Disconnect the equipment from the electrical outlet
- 2 - Use liquid detergent and a brush to clean the equipment.
- 3 - When the equipment is not used for more than 7 days, the reservoir must be emptied, and cleaned, then run all water through once.
- 4 - In areas with hard water, it may be necessary to occasionally clean the submersible water pump inside the reservoir.

Cleaning the Water Pump

- 1 - Remove the pump from the water reservoir (picture 4).
- 2 - Remove the front cover of the water inlet (picture 5/item "A").
- 3 - Remove the protective cover from the rotor (picture 5/item "B").
- 4 - Remove the propeller from the engine (picture 5/item "C").
- 5 - Clean all pump parts with water and neutral liquid soap.
- 6 - Rinse all parts and reassemble the pump.



Troubleshooting

PROBLEM	PROBABLE CAUSE	SOLUTION
Fan does not turn on	<p>The On/Off button is not in ON position.</p> <p>Not plugged to the electrical outlet.</p> <p>No electrical power on the outlet.</p>	<p>Turn the button to ON position.</p> <p>Make sure fan is plugged into live electrical outlet.</p> <p>Press reset button on GFCI plug.</p>
Not Misting	<p>No water in the water reservoir.</p> <p>The mist adjustment valve is closed.</p> <p>Defective/Dirty water pump Pump is not well connected or loose.</p> <p>Air in the water line.</p> <p>GFI electrical outlet is "tripping" with the use of fan.</p> <p>On/Off Switch is not working.</p> <p>White plastic spinning disc is damaged.</p>	<p>Add water to the reservoir.</p> <p>Open the mist valve.</p> <p>Clean the water pump. Reconnect the pump tubing to the mist valve connector as it may have disconnected during transportation.</p> <p>Verify if there's no air inside the water tubing that is preventing water to flow. Turn the equipment on and off repeatedly and/or pump the air out to allow water flowing.</p> <p>Make sure the outlet and its power grid has enough power capacity to feed the fan.</p> <p>Contact EcoJet customer service for a new switch.</p> <p>Contact EcoJet customer service for a new disc.</p>
Dripping	<p>Mist valve is excessively open for existing conditions.</p> <p>Dirt in the reservoir.</p>	<p>Use the mist valve to reduce the mist.</p> <p>Perform the cleaning procedures.</p>

WARRANTY



Defective Return Policy

All EcoJet by Joape products come with a limited guarantee against defects in materials and workmanship for a period of one (1) year from date of purchase.

EcoJet fans and pumps need to be routinely cleaned per user manual instructions to work properly and not void the warranty.

Warehouse returns

1. Return Policy - Goods Shipped From EcoJet Warehouse

Customer will contact EcoJet and request a defective return authorization.

Upon presenting purchasing documentation (invoice copy, credit card receipt, etc.)

EcoJet by Joape will immediately approve and authorize return, assigning an RTA number.

2. EcoJet by Joape will, at their discretion:

- refund the purchase price and advise customer to either destroy in field or return at EcoJet by Joape's expense or
- replace the defective product

3. Should EcoJet by Joape request that the product be returned they will provide prepaid shipping information to customer.

4. In the case of replacement product EcoJet by Joape will prepay the new product's shipping costs.

Distributor Sales returns

1. Return Policy - Goods Shipped from distributor Warehouse.

Customer will contact distributor directly.

Upon confirming warranty claim distributor will contact EcoJet for a RTA number.

Retail Sales Returns

1. All returns must be handled by the retailer your fan was purchased from. Call them directly with your purchase information.

Parts

1. Customers needing replacement parts for fans over 1 year old from date of purchase should contact EcoJet directly at the contact info provided below.

Contact number for all EcoJet by Joape return request is 305-713-4424 or via email at admin@southbee.com

In all cases EcoJet by Joape will strive to settle all warranty claims within 5 working days of initial request.

If used indoors EcoJet fans require an exchange of air sufficient to maintain proper humidity levels.