

WARRANTY REGISTRATION

Please complete and mail or fax your product warranty registration card. For multiple units, please list serial numbers on a separate sheet.

THIS WARRANTY CARD AND YOUR BILL OF SALE MUST BE PRESENTED FOR WARRANTY SERVICE.

Your Company Name _____
 Contact Name _____ Title _____
 Address _____
 City _____ State _____ Zip _____
 Phone _____ Fax _____
 E-mail _____

Vent VP-25

Serial Number _____ Date of Purchase ____/____/____
 Purchased From _____
 Additional Comments/Suggestions _____



550 South Ayon Ave. Azusa, CA 91702

1-877-800-BAIR (2247)

Fax: (626) 385-3307

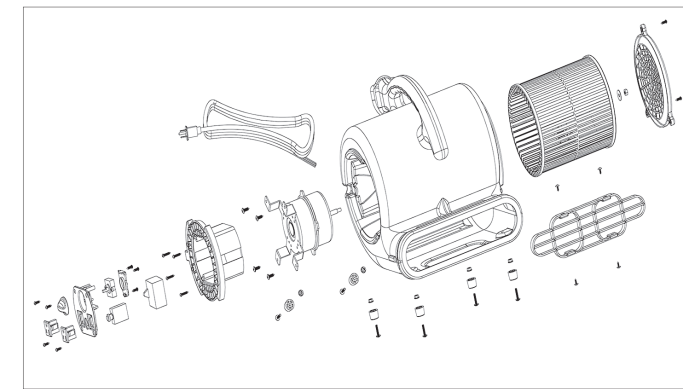
Email: info@b-air.com

Web site: www.b-air.com

Vent VP-25 PART LIST

| | | |
|-------------------------|--|-----|
| A. Housing | | X1 |
| B. Motor | | X1 |
| C. Capacitor | | X1 |
| D. Fan | | X1 |
| E. Air Intake Grill (M) | | X1 |
| F. Switch Plate | | X1 |
| G. Plug Socket | | X2 |
| H. Circuit Breaker | | X1 |
| I. Switch | | X1 |
| J. Switch Knob | | X1 |
| K. Switch Backboard | | X1 |
| L. Power Cord | | X1 |
| M. Air Exhaust Grill | | X1 |
| N. Air Intake Grill (F) | | X1 |
| O. Rubber Feet | | X6 |
| P. Nut 5mm | | X6 |
| Q. Screw 5x20mm | | X6 |
| R. Screw 4x12mm | | X10 |
| S. Screw 4x18mm | | X4 |
| T. Screw 5x16mm | | X4 |
| U. Screw 4x10mm | | X4 |
| V. Gasket 6mm | | X1 |
| W. Nut 6mm | | X1 |

Explosion of Vent VP-25



Troubleshooting

| PROBLEM | POSSIBLE CAUSE | SOLUTION |
|---------------------------|-----------------------|---|
| Motor Not Running | a) Switch is OFF | a) Turn Switch ON |
| | b) Bad Outlet | b) Check Outlet/ Change to Another Outlet |
| | c) Faulty Switch/Cord | c) Call Factory for new Switch/Replace Cord |
| Scraping Noise From blade | a) Fan blade loose | a) Call Factory for Replacement Advise |

Specifications

| | |
|---------------------|--------------------------|
| VOLTS | 115 V |
| CYCLE | 60 Hz |
| MAX AIR VOLUME | 900 CFM |
| AMPS | L:1.7/M:1.8/H:2.1 |
| MAX STATIC PRESSURE | 1.3" |
| WEIGHT NET/SHIP | 11.3/12.6 LBS |
| UNIT SIZE (LxWxH) | 12.8" X 12.4" X 13.3" |
| WHEEL SPEED (RPM) | L:1060 / M:1370 / H:1600 |
| MOTOR | 1/4 HP |
| ATTACHED CORD | 10 FT/14 AWG |
| SPEEDS | 3 |

OPERATION
SAFETY
SERVICE
WARRANTY
CONTACT
SPECIFICATIONS
TROUBLESHOOTING

Vent VP-25

Instruction Manual
READ AND SAVE THESE INSTRUCTIONS



THANK YOU FOR PURCHASING A B-AIR PRODUCT.

Introduction

The evolution of the centrifugal air mover continues. With maximum amperage draw being 2.1 amps on its highest setting combined with its small size, the Vent VP-25 takes an overall concept and succeeds in making a true tool for real contractors. The rotomolded housing is durable and washable.

The multipurpose design allows operating positions for horizontal, 45° and 90° angles.



The balanced handle also acts as an optimum cord wrap assembly freeing the VP-25 of obstructions for secure stacking (4 units high).

Features:

- 1/4 Horsepower Motor
- 900 CFM of directional air flow
- 2.1 Amps
- 3 Speed / 3 Positions
- Durable Rotomolded Housing
- Ergonomic Handle / Cord Wrap Assembly
- 11 lbs, Stackable (4 units high)

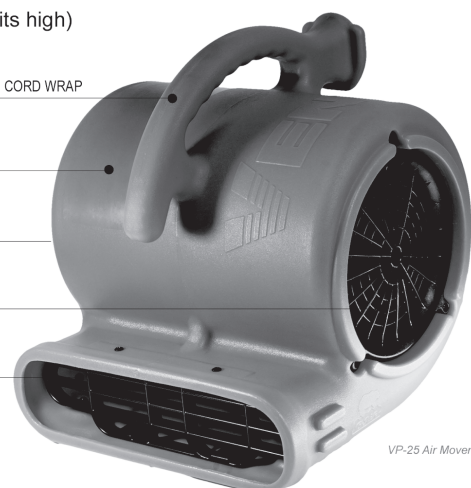
BALANCED CARRYING HANDLE WITH CORD WRAP

PRIVATE LABEL AREA (OPTIONAL)

3 SPEED POWER SWITCH
2 ADDITIONAL OUTLETS

INTAKE GRILL

EXHAUST OUTLET



VP-25 Air Mover

Safety Information

When using industrial equipment basic precautions must be followed, not limited to the following:

Lorsque vous utilisez des appareils électriques, des précautions de base doivent toujours être prises, y compris ce qui suit:

- Do not put fingers or other objects in the unit while in operation and/or plugged in.
- Ne placez jamais votre visage, vos mains ou d'autres parties sensibles de votre corps dans le courant d'air, les arrivées ou les sorties d'air de cet appareil.
- To avoid electric shock, do not operate the unit in pooled water. The motor must be kept dry at all times. If the unit becomes wet, thoroughly dry it before the next operation.
- Le moteur doit toujours rester sec. Si l'unité est mouillée, séchez-la minutieusement avant la prochaine utilisation.
- Use only a grounded plug or extension cord to avoid risk of electric shock or fire. Never use a cord showing any kind of damage or wear.
- N'utilisez qu'une prise de mise à la terre ou une rallonge pour éviter tout risque de choc électrique ou d'incendie. N'utilisez jamais un cordon présentant une trace de dommage ou d'usure.
- Clogging or blocking the air intake vents could result in a fire or electrical hazard. Do not remove any screens or safety guards from the unit.
- Obstruer ou bloquer les prises d'air pourrait entraîner un incendie ou un danger électrique.
- Do not operate the unit close to any dangerous areas, such as explosive gas, flammables, heaters and unventilated environments.
- Ne faites pas fonctionner l'unité près d'une zone dangereuse, comme des gaz, des produits ou des substances inflammables, des appareils chauffants ou dans des environnements non ventilés.
- Do not use aftermarket speed control devices.
- N'utilisez pas d'appareils de commande de la vitesse provenant du marché de rechange.
- Do not use unit if showing damage.
- N'utilisez pas l'unité si elle présente des dommages.
- Before cleaning or servicing, unplug the unit.
- Avant tout nettoyage ou toute révision, débranchez l'unité.
- Unplug unit when not in use.
- Débranchez l'unité lorsqu'elle n'est pas utilisée.
- Do not allow children to play with or near the unit.
- Ne laissez pas des enfants jouer à proximité ou avec l'unité.
- Do not sit or stand on the unit.
- Ne vous asseyez pas ou ne montez pas sur l'unité.
- Make sure that hands are dry before handling the unit or power cord.
- Veillez à ce que vos mains soient sèches avant de manipuler l'unité ou le cordon d'alimentation.
- All units must be monitored while in use.
- Toutes les unités doivent être surveillées lors de leur utilisation.
- Only a qualified electrician should attempt to repair/replace any electrical components.
- Seul un électricien qualifié doit tenter de réparer/remplacer des composants électriques.

Power Requirements

Cords

Use 3 pronged adaptors that are UL and CE approved and no less than 14-3 with Ground Fault Circuit Interrupter (G.F.C.I.). Do not use cords that show any kind of wear or damage. Cords are not covered by warranty.

Warning!

The total amperage of the Vent VP-25 Air Mover plus all other devices plugged into the receptacle must not exceed 12 amps.

Operating Instructions

The B-Air Vent VP-25 Centrifugal Air Mover is packaged and ready to be put to work. The VP-25 requires no assembly.

The VP-25 is intended to be used for carpet cleaning, janitorial, sanitation, water damage restoration, construction and for general structural surface drying and ventilating.

Place the unit on the ground. Plug the unit into a grounded outlet and select the desired speed.

Maintenance

WARNING: As with all electrical equipment, the unit must be disconnected from power before servicing or cleaning.

Avant tout nettoyage ou toute révision, débranchez l'unité.

Before each use, inspect the unit for damage, blocked inlets and exhaust and for foreign material buildup.

Pour éviter que l'unité ne surchauffe, toutes les prises d'air doivent toujours être propres.

When the Vent VP-25 is turned on, inspect the unit for excessive vibration. In the event of excessive vibration or if the fan wheel rubs against the rotomolded housing, immediately turn off the unit and have a certified technician inspect the unit.

Seul un électricien qualifié doit tenter de réparer/remplacer des composants électriques.

Servicing

In order to receive service or replacement parts under warranty, you must:

- Call for an RMA (Return Merchandise Authorization Number)
- Have proof of purchase

Upon inspection, we will advise you of the repairs needed and the cost (if applicable). B-Air will issue repair or replacement parts depending on warranty.

Limited Warranty

Warranty covers against defects in material and craftsmanship used under normal intended use to original purchaser for a term of (2) two years from the original date of purchase including parts, labor and 1 way shipping. Housing is covered for a term of (5) five years from the date of the original purchase.

Important!

Warranty does not cover signs of misuse including, but not limited to rough handling, abuse, tampering, improper voltage use and unauthorized maintenance and repairs

PLACE
STAMP
HERE



550 South Ayon Ave.
Azusa, CA 91702